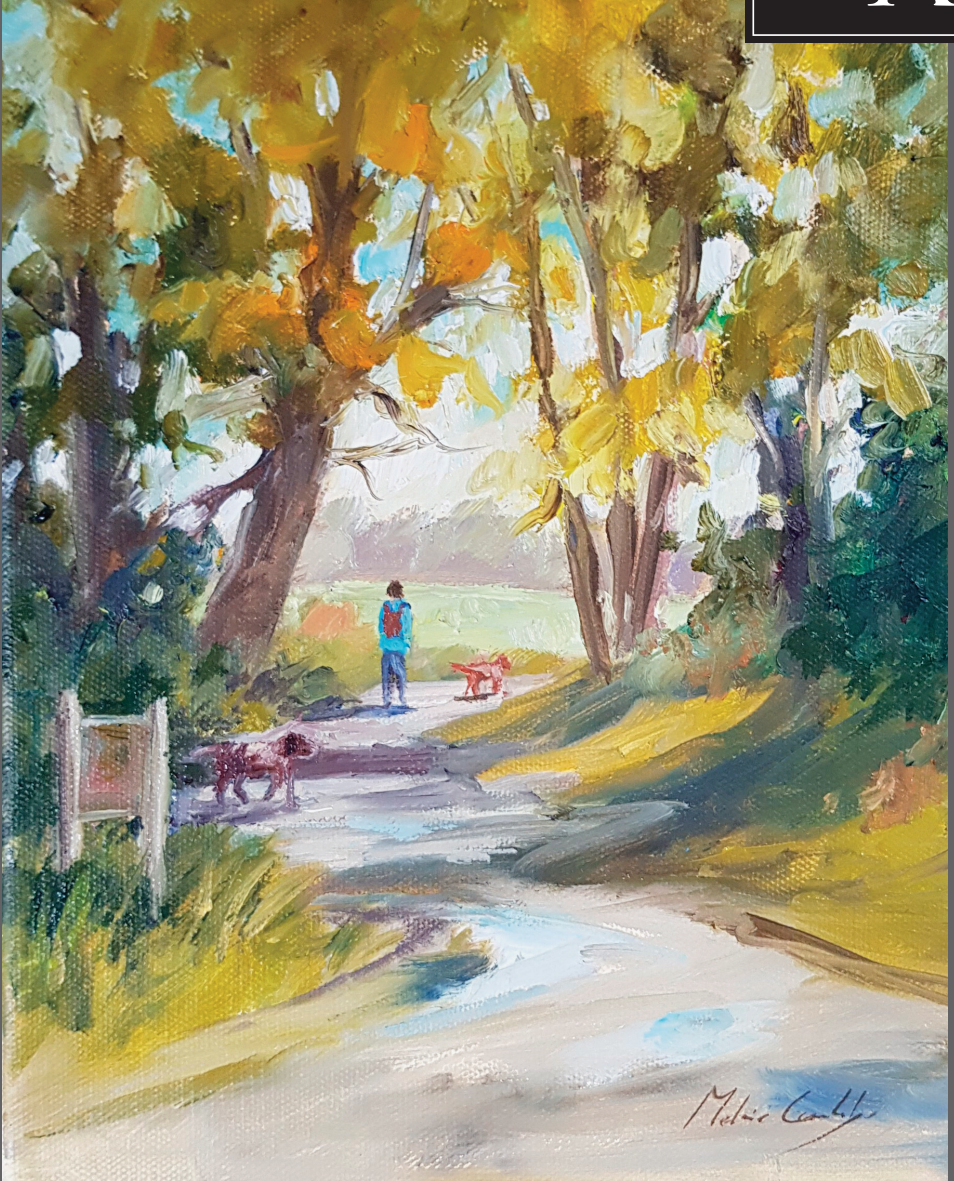


# THE RIDDLEDOWN RECORDER



# RIDDLEDOWN'S

POST OFFICE

Newsagents, Confectioners  
and General Store

Come to us for your . . .

- Dry cleaning
- National Lottery
- Fresh farm eggs
- Wines, spirits and beers
- Groceries, fruit  
and vegetables
- Fresh bread and rolls  
(Sats. only)
- Chilled drinks, meats and dairy produce
- Frozen ice cream, ready meals
- Newspapers and magazines (all can be delivered)
- Stationery, cards, tobacco and confectionery



## OPENING TIMES

### Shop:

Mon to Sat 6am – 8.30pm

Sun. 6am – 8pm

### Post Office:

Mon – Sat 8.30am – 7pm

Sun 9am – 1pm

Last collections from postbox:

Weekdays: 5pm

Sat. and Bank Holidays: Midday



SUPPORT YOUR LOCAL POST OFFICE

Easy Parking

**102 Lower Barn Road**

**Tel: 020 8645 6510**

# CONTENTS:

| <i>Section Heading</i>                      | <i>Page</i> |
|---|-------------|
| <b>The RRA Committee Members</b> . . . . .  | <b>4</b>    |
| <b>RRA Editor’s Notes</b> . . . . .         | <b>5</b>    |
| <b>The RRA Committee Reports</b>            |             |
| Chairman’s Report – Brian Longman . . . . . | <b>6</b>    |
| Planning Report – Phil Thomas . . . . .     | <b>9</b>    |
| Environment Report – Phil Thomas. . . . .   | <b>13</b>   |
| Membership – John Rapp . . . . .            | <b>16</b>   |
| Transport – John Rapp . . . . .             | <b>16</b>   |
| <b>Your Contributions and Articles</b>      |             |
| Riddlesdown – an Artist’s View . . . . .    | <b>18</b>   |
| RRA Area Street Names . . . . .             | <b>20</b>   |
| 19th Purley Scout Group . . . . .           | <b>23</b>   |
| Riddlesdown Collegiate . . . . .            | <b>25</b>   |
| Councillors’ Reports . . . . .              | <b>26</b>   |
| <b>Community Pages</b>                      |             |
| Community Listings . . . . .                | <b>29</b>   |
| <b>Advertiser Index</b> . . . . .           | <b>34</b>   |

Front Cover Image “Morning Walkies”  
by Mel Cambridge

This is your local Community Magazine – for future issues we welcome your contributions, either directly about Riddlesdown or which are of interest to local residents – send these to editorrra@gmail.com

Further information and past issues of this magazine can be found on our website:

[www.riddlesdownresidents.org.uk](http://www.riddlesdownresidents.org.uk)

## **IMPORTANT TELEPHONE NUMBERS**

All Emergencies: (Fire, Police, Ambulance) **999**  
 Police Non Emergency Number: **101**  
 Purley Oaks and Riddlesdown SNT: **07584 186578**  
 E-mail: SNMailbox-  
 PurleyOaksandRiddlesdownSNT@met.police.uk  
 Sanderstead Police: **020 8721 2470**  
 E-mail; SNMailbox.SandersteadSNT@met.police.uk  
 NHS Non Emergency Number : **111**

# THE RIDDLEDOWN RESIDENTS' ASSOCIATION COMMITTEE MEMBERS



**Brian Longman**  
*Chairman and Riddlesdown  
Collegiate Liaison*



**Phil Thomas**  
*Vice Chairman, Planning &  
Environmental & Website Editor*  
riddlesdownresidents@gmail.com



**John Placek**  
*Treasurer and Data Protection  
Officer*



**John Rapp**  
*Membership, Road Stewards and  
Public Transport Concerns*



**Neil Tarrant**  
*Recorder Editor*



**Berni Munt**  
*Minutes Secretary*



**Keith Powell**



**Janice Kedwards**



**Jan Powell**



**Joyce Boakye-Ansah**



**Ann Shepherd**



**Helen Chase**  
*Footpaths Officer*

**You may write to the Riddlesdown Residents' Association at any of the following addresses:  
66 Westfield Avenue, Sanderstead CR2 9JU or 37 Buttermere Gardens, Purley CR8 1EJ,**

Please mark your correspondence with the committee member's name, if applicable. Or you can e-mail any committee member at **RiddlesdownResidents@gmail.com** or at any of the e-mail addresses listed above.

RRA notice boards are situated in Lower Barn Rd by Riddlesdown Pharmacy, on the Green opposite the shops in Lower Barn Rd, on the Green in Lower Barn Rd near St Edmund's Church and on the side wall of St Edmund's Church.

**Website: [www.riddlesdownresidents.org.uk](http://www.riddlesdownresidents.org.uk) Email [RiddlesdownResidents@gmail.com](mailto:RiddlesdownResidents@gmail.com)**





# EDITOR'S NOTES

BY NEIL TARRANT

In the years since the pandemic we began to produce only one issue of the Recorder per year. Although this was initially a temporary measure, the committee have subsequently decided that this will now be a permanent arrangement.

I am, however, delighted to say that we still have the usual mixture of reports from the committee, regular information from local societies and groups and our councillors. We are also pleased to include a report from Dr Parimal Bhatt the new principal of Riddlesdown Collegiate. We wish him every success in his new role!

In addition to these reports I am also very glad to include contributions from two residents. The first is Mel Cambridge, a talented local artist whose work you can see on the cover, who has written about drawing inspiration from our local area. The second is by Ben Winstanley who is sharing the results of his investigations into local road names. If you would like to contribute to the magazine please get in touch with me at:

[editorrra@gmail.com](mailto:editorrra@gmail.com)

Finally I would like to thank Roger Cherill for his work putting the magazine together.



**Worried about Identity Theft?**



**...Try Simply Shredding**

**Tel: 01883 741 000      [shredding@sandersteads.com](mailto:shredding@sandersteads.com)**

**SIMPLY shredding**  
secure document & data destruction

The advertisement features a central image of a stack of papers on the left and a large pile of shredded paper on the right. The text is arranged around this image, with a headline at the top, a call to action in the middle, and contact information at the bottom. The logo for 'SIMPLY shredding' is in the bottom left corner.

# CHAIRMAN'S REPORT

## BY BRIAN LONGMAN

Welcome to the 2024 Summer edition of the Recorder Magazine.

In my last report, I mentioned that back in the 1950s and 1960s the Association ran a number of successful social activities as the population of Riddlesdown grew. One such activity was the Riddlesdown Residents' Association Amateur Dramatic Society (RRADS), who produced many performances at St Edmund's Hall. After the publication of that edition I received lots of information, sent to me from Jennie, whose family were very much involved in RRADS. Jennie's grandfather, Kerry, was President, her mum, Kathleen, both acted and produced and her dad acted and did the stage management. He also made all the scenery in the old Scout hut.

Jennie also provided many photographs, programmes and several newspaper reports, constituting lots of Riddlesdown local history. In 1959, RRADS performed 'Haul For The Shore' a hilarious Cornish smuggling comedy that had the audience in peals of laughter from the lifting to the fall of the curtain.

What I also found interesting was the wide range of local shops advertising in the RRADS programmes back in 1959. Just in the local shops in Mitchley Avenue, you had Spackmans the Greengrocer, Thomas Imms the family Butcher, Frasers the Estate Grocer, and Mitchley Hardware Stores, with most offering telephone ordering and a delivery service.

We now have a potted history of RRADS so, what next? Some of you will be aware that

many years ago the Association set up a Riddlesdown Residents' Association Archive, consisting mainly of old Riddlesdown Recorders starting from 1937, which is now located in Croydon Town Hall. Nick Bygrave, one of our previous Editors of the RRA Recorder, would often visit the archives in the Town Hall looking for information of general interest for publication in the current Recorder. The Association website already publishes extracts from our archive along with other interesting Riddlesdown based articles. The question is, do we need to develop this area further, the social history of Riddlesdown? Are you interested in joining the committee to take this project forward? If so please contact me.

Moving on I would like to say a few words about our two Safer Neighbourhood Police teams (SNT), the Sanderstead and the Purley Oaks & Riddlesdown SNTs.

Both SNTs hold regular open public meetings. The Sanderstead team meets at Riddlesdown Collegiate, or All Saints Church Hall and the Purley Oaks & Riddlesdown team meets at Christchurch, Brighton Road, Purley, or Riddlesdown Collegiate. The dates and venues are published on our website and also on the SNT police website. The meetings discuss local crime issues and set new local priorities for the next quarter. Unfortunately, the number of local residents attending is very low. This is your chance to have your say about any crime issues in your area.

I think there might be another reason for the



low attendance at the meetings. Many of residents I have spoken to are not sure which Safer Neighbourhood Police teams they are in. Following the boundary changes to the Council Wards about 6 years ago, the boundaries of SNTs were also changed to mirror the new Council Ward arrangements. We now have the Sanderstead team and the Purley Oaks & Riddlesdown team, each covering around half of the RRA area. There is also a small slither of the Purley & Woodcote SNT area, at the top of Downs Court Rd and Cranford Close. Please go to our website and under Local safer Neighbourhood Team's you will find which one of the two Safer Neighbourhood Police teams you are covered by.

You might also like to read the police SNTs' news sheets on our website, which are published monthly by both teams and review the priorities as agreed by the previous SNT panel meeting. The SNT panel meetings are open to the public and very informative. I hope to see more residents at the next SNT meeting.

Moving on I would like to say thank you, to our hard-working committee who have all been extremely active during the last year.

John Placek is our Treasurer who successfully managed our introduction to digital banking. This gave residents the option to pay the annual subscription of £5, either by cash, cheque, standing order, direct debit, or pay via their online bank account. For your information, the large majority of subscriptions last year continued to be paid in cash. We hope more residents will switch to online banking this year. Please see our online banking information in this edition of

the Recorder, or on our website.

Neil Tarrant, produces both our informative Recorder magazine, while also managing our extremely well attended Children's Christmas Party with his wife Rachel. Incidentally for our children's Christmas party, first held in 1957 at St Edmund's, we have always managed to loan the small tables and chairs required from the on-site Nursery. However, the Nursery has now closed at St Edmund's, and we have to borrow small tables and chairs from All Saints. So we are considering buying our own children's table and chairs. Does anyone have contacts in this area, if so please contact me?

Phil Thomas is both our Vice Chairman and our Planning and Environmental Officer. Phil also manages our full range of online services, including the E-Blast, the website and our Facebook page. The E-Blast system continues to grow and develop providing Riddlesdown Residents with a wide range of local information on a monthly basis. If you have not tried the E-Blast yet, please have a look, details are on our web site, on the left side of the homepage.

I think we can all see the growing trend, as Committee numbers fall, those covering more than one role increases. Many Residents' Associations in Croydon are struggling but we are extremely lucky to have such a dedicated team of volunteers.

However, we need more people to step forward for both the committee and road stewards, especially those with energy, enthusiasm and a community spirit. If you are interested and want to know more about any of the above, please e-mail me via the RRA's

e-mail address, or give me a call.

Finally, while writing this report, I have been reminded that the first Monday of June every year is the start of Volunteers week and the RRA needs a few more volunteers. However, with a different hat on, I am also a trustee of the charity Croydon Neighbourhood Care Association (CNCA). CNCA run a very popular bespoke befriending service providing home visits to frail, elderly, and housebound people with complex needs, and often a dementia diagnosis. Alongside this is a volunteer run telephone 'keeping in touch' service. CNCA are currently looking for volunteers to help support the telephone

'keeping in touch service'. Have you 30mins, or an hour to spare once a week, that you can telephone from your home, or the CNCA office, and become a volunteer and make a difference to people's lives? If so, please contact the CNCA on 020 8662 1000, or email [info@cnca.org.uk](mailto:info@cnca.org.uk)



## Your new life, delivered perfectly

Every year, we help thousands of people start their new adventures.

Where can we move you?



REMOVALS | STORAGE | SHIPPING

**01883 74 1000**

**[www.sandersteads.com](http://www.sandersteads.com)  
[info@sandersteads.com](mailto:info@sandersteads.com)**





# PLANNING MATTERS

## BY PHIL THOMAS

### Recent Planning Applications and Decisions

A fair amount has happened on the planning front since the last Summer 2023 Recorder, so I will briefly summarise below some of those previous planning applications and decisions since the last edition.

It is still noticeable that since the change of control of the Planning Committee in May 2022 (it is now 5 Conservative and 5 Labour Councillors, but the Conservative Chairman has the casting vote), that many more applications for both flats and houses that are going to Committee are being refused by the Committee (but not all of them). It is also noticeable that the Council's Planning Officers are refusing more under delegated authority, and the Planning Inspectorate (PINS) are also dismissing many appeals in the south of the Borough for this type of development, which the Officers and Planning Committee have refused, when the application has gone to appeal (about 85%). More detail of the status of each application can be found on the planning pages of the RRA's website.

I will first summarise and briefly update you on some previous applications:

**125 Mitchley Ave:** a third application was submitted to the Council, to convert this house into two flats (1 x 2- and 1 x 3-bedroom flats with vehicular parking -- 3 spaces). This application was refused by the Council on 14 December 2022. An appeal was lodged with PINS and the appeal was allowed on 20 November last year.

**98 Hyde Road:** there are still five applications

in with the Council, namely, to vary a condition, a non-material amendment, variation of Condition 1 and two applications to discharge conditions. The Council have still not determined these five applications – two of them were validated in April 2021, and one in January 2022. So some time ago. We understand most of the flats are occupied now, yet full planning consents have not been granted. Both the RRA and Ward Councillors are in contact with the Planners about these applications.

**89 Hyde Rd:** the building work on this site lay dormant for most months in 2023, but works have again commenced and will hopefully be completed later this year, for 9 flats.

**30 Riddlesdown Ave:** this application, for the 'demolition of existing garage and shed fronting Riddlesdown Road, alterations to land levels, erection of dwelling house (over two floors) and associated parking, cycle storage and refuse storage' is for a new house fronting onto the access road in Riddlesdown Road. The RRA were contacted by a number of nearby residents and we objected to this application. The application was approved by the Planning Sub-Committee on 9 November last, but the application is still subject to the completion of a Section 106 agreement within 3 months of the Committee date. At the time of writing, the Section 106 agreement has not been completed, so the application has still not been formally granted.

**31 Copthorne Rise:** I reported last time that an application was submitted in December 2022 for 'the demolition of a detached garage,

alterations to land levels, erection of two detached two storey houses with accommodation within the roof space, formation of vehicular accesses and car parking spaces (including an access and parking space for the host property), provision of associated cycle and refuse.' This application for two houses at the rear of No. 31 and fronting onto the cul-de-sac section of Westfield Ave, was refused on 28 April by the Planning Officer under delegated authority.

However, a second application was submitted on 14 Aug 2023 for the "Demolition of a detached garage, alterations to land levels and erection of a detached single storey dwelling house with accommodation within the roof space, formation of a vehicular accesses and car parking spaces (including an access and parking space for the host property), provision of associated cycle and refuse storage." This application for a single dwelling was approved by the Planning Sub-Committee on 22 February 2024. However, the application is still subject to the completion of a Section 106 agreement within 3 months of the Committee date. Again, at the time of writing, the Section 106 agreement has not been completed, so the application has not been formally granted.

### **Some new applications since the last Recorder are:**

**Purley Leisure Centre, High Street, Purley:** an application for the "Demolition of the existing buildings and erection of buildings of 5 to 12 storeys to provide a leisure centre (Use Class F2), commercial unit (Use Class E), an Integrated Retirement Community comprising a mix of Specialist Older Persons Housing and Care Accommodation for older people (Use Classes C2 and C3), car parking, landscaping, and associated works." was

validated by the Planners on 15 March 2024.

The proposals have been put forward by Polaska Assets Ltd (the Head Lessee) to demolish the existing 424 space multi-storey car park and swimming pool, and build a new swimming pool and gym, plus circa 220 'Later Living' flats (mainly for rent and with a small car park) and a short-term public car park with circa 50 spaces (including 5 disabled spaces).

The RRA along with six other local Residents Associations (RAs) - Hartley & District, East Coulsdon, Old Coulsdon, Coulsdon West, Croham Valley, and Selsdon, have come together, to express some concerns about the scheme, to both the Executive Mayor, Jason Perry and Chris Philp MP, who are both in favour of the proposal.

Representatives from the seven RAs met with the Executive Mayor Jason Perry, three Ward Cllrs and Chris Philp MP on 23 April. The seven RA members raised a number of comments from our objection letter, and we submitted this objection letter to the Planning Department just after the meeting. Whilst the RAs are keen to see a new swimming pool and gym built, we are concerned about the significant reduction to public parking for Purley town centre. The proposals reduce the current provision from 424 parking spaces to just 50, and we are concerned by the possible effect that this could have on the Purley District Centre. At the time of writing, no decision has been made on this application.

**26-52 Whytecliffe Road South & Purley Station Car Park:** in relation to the above Purley Leisure Centre application, an application which was submitted in April 2021, was granted by the Planning Committee on 4 April 2024, subject to the completion of a Section 106 agreement. It is for the

“demolition of the existing three terraces of houses, redevelopment of these and the existing surface level car park. Erection of a part 6/part 8/part 9 storey building and separate part 4/part 5 storey building to provide 238 residential units together with replacement station car park, together with ancillary community indoor space, disabled car parking, communal amenity space, all for the residents and improvements to the public realm on Whytecliffe Road South.” The site is opposite the Purley multi-storey car park and former leisure centre on Whytecliffe Rd South. This could mean the demolition and loss of the Purley station car park and the Council’s multi-storey car park occur at the same time, a situation that would continue for around 3 to 4 years during construction. It could also result in the construction of two tallish buildings in close proximity and directly opposite one another on Whytecliffe Rd South.

**79 Riddlesdown Road:** an application was validated in January 2024 for the “demolition of the existing dwelling and alterations to the existing land levels to provide a new part two/four storey building comprising 6 Passivhaus Certified residential dwellings (4x2 bedroom and 2x3 bedroom units). The proposals offer private and communal amenity spaces and car parking provision (5 spaces). Associated refuse and cycle storage is proposed.”

Both myself and Cllr Alasdair Stewart spent a lot of time in February and March 2023 discussing this proposal for 6 flat development with the applicant after he contacted us, and we gave him our advice and thoughts on his proposal. Whilst the applicant accepted some of the guidance we gave, and made some changes, we felt that the proposal was still an

over-development of the site, and that the car park layout was also poor and too small. We suggested to the applicant in March 2023 that he should pay to seek pre-application advice from the Council's Planning Department. Unfortunately, he did not take our advice and submitted his application in January 2024 without the pre-application advice.

The Council's Planning Dept refused the application under Officers' delegated authority on 22 March. We will be surprised if this refusal goes to appeal.

**823/825 Brighton Road Purley** (former Milk & More Depot - proposed new M&S Foodhall): an application was validated in November 2023 for the “partial retention of 823 Brighton Road together with demolition of structures to the rear and no.825 to provide a mixed-use development comprising a single retail unit (Class E) fronting Brighton Road together with light industrial/Studio space (Use Class E) for a Creative and Cultural Enterprise Centre to the rear. Creation of new vehicular access and loading bay onto Brighton Road and car park (70 spaces). Installation of 2 totem signage columns and other associated works.” This application is for a Marks & Spencer Foodhall with a car park and there is a lot of support for the application from residents and very few objections. The RRA did send a letter of support in. At the time of writing no decision has been made.

**77/79 Mitchley Ave** (Vera restaurant): a second application was submitted in December 2023 to vary a condition of the opening hours from the original planning permission. The proposal was sought permission to open until 11pm on Friday and Saturdays, extending the opening hours of 10.30pm agreed in the original planning

decision of 10.30pm. The Council refused this application in February, but in their decision letter they have erroneously used the hours entered in the original planning application, which requested a closing time of midnight. Vera restaurant appealed this decision in March, based partly on the Planning Department's incorrect wording in their decision letter. The Planners in their statement to the Planning Inspectorate admit that there was an error, but they advise there are also outstanding noise complaints from the restaurant which have not been resolved. At the time of writing, no decision has been made by the Planning Inspectorate.

**90 Riddlesdown Road:** an application was validated last November for the "demolition of existing detached house and alterations to the existing land levels; erection of a single

block of 9 apartments with associated landscaping, car parking and refuse/cycle storage facilities." This site is next door to No. 88 currently under construction for 21 flats, and there were a number of objections to this application. The Planners refused the application in January. The main reason for refusal was that the "development would result in a building that is excessive in scale, depth, mass, bulk and height and fails to deliver an acceptable design approach to the visual appearance of the building." The Officer also stated that "the proposed development, by way of its excessive scale and overbearing appearance to 90A Riddlesdown Road, the development would cause harm to neighbouring living conditions through the creation of a sense of enclosure, loss of outlook and privacy."

# desresblinds



**Customer service and  
quality guaranteed by  
small family business  
specialising in  
domestic blinds**

- rollers ■ venetians ■ verticals ■ velux ■ pleated
- conservatory roof ■ awnings ■ shutters
- canopies ■ window films ■ curtains

**Call us for an estimate or check out our website**

**Tel/fax: 020 8651 3569. Mobile: 07961 827 917**

**email: [info@desresblinds.co.uk](mailto:info@desresblinds.co.uk)**

**web: [wwwdesresblinds.co.uk](http://www.desresblinds.co.uk)**

# ENVIRONMENTAL ISSUES

BY PHIL THOMAS

**Brighton Road Cycle Lane Corridor:** this experimental cycle lane scheme went 'live' on 3 April 2023 and was implemented under a temporary Management Order for 18 months. The public had 6 months to raise comments/concerns (or praise) for this scheme with the Council. Measures included creating wider cycle lanes with traffic wands and defender bases for segregation, to deter vehicles from entering the cycle lanes.

A report was submitted at the Council's Cabinet on Wednesday 15 May last, which advised that 458 objections were received to the scheme in its current form and the emergency services also raised concerns about the segregation, because in an emergency they cannot pass stacking traffic easily. The Cabinet decided to make the Brighton Road experimental cycle lane scheme permanent (Purley town centre to the Bartlett Street junction in South Croydon - both ways) but will remove the light segregation (wands and base defenders) to make it safer for all road users.

The Council also said: "While the council's technical review found that there have been benefits to the scheme, including the widened cycle lanes, there have also been a number of challenges which are being addressed. The review found road safety problems for both cyclists and motorists, emergency services experiencing difficulties and delays in responding, cycle lanes couldn't be mechanically swept, resulting in debris and blocked gullies that causes hazards for cyclists. Brighton Road residents were also unable to receive deliveries at all times."

There will be a review of a number of junctions on Brighton Road (including the Riddlesdown

Road junction) and the Council will be considering proposals to support local businesses by having additional parking bays in side-roads, which will be free for the first hour.

**Gas Main Works in Riddlesdown:** following the gas main works undertaken in the summer of 2022 and some work in 2023 in Honister Heights, the RRA have been advised at the time of writing by the contractor working on behalf of SGN (Forefront Utilities), that gas main replacement works will not happen in the summer school holidays of 2024. We believe they still have to finish laying new gas mains to Dalegarth Gardens, Eskdale Gardens and Honister Heights. At the time of writing, we are not clear why these works have been postponed this summer, but if we receive any further updates these will be posted on our website, on our Facebook page and in our E-Blast.

**Flooding In Riddlesdown:** after all the money spent on flood alleviation works in Mitchley Avenue and the section of Lower Barn Road by the railway station in the summer of 2021, flooding continues to occur at both locations causing inconvenience to residents in heavy rain. We are still in correspondence with the Council about this and they advise us that further works are planned, but as yet we do not have any further updates. The RRA will continue to pursue these flooding issues with the Council.

**Grass Verges:** the grass verges in most of Riddlesdown were last cut in August 2023. At the time of writing, in early June, the verges have still not been cut and in some locations, it is now a safety issue especially on road junctions with sight lines. Some street name



plates are now covered with high grass, as are some of the concrete bollards where they are positioned. There is also litter and broken glass and dog and fox excrement in some verges – as we found out on the litter pick in April. The RRA have asked the Council many times since October 2023 when the verges will be cut and each time we have been told that it will be soon. So far, those promises have not materialised (early June). Thank you to all those residents who do cut the verges outside their properties. It makes that part of the streets look so much neater. Of course, the other issue will be that, when the verges are cut, a lot of the grass debris will no doubt end up in the gutters and in the road gully grids, causing more flooding issues.

**RRA Litter Pick:** a big thank you to all those residents, Cllr Endri Llabuti, plus many Beavers, Cubs and a few Scouts from the 19th Purley Scouts who turned up at the litter pick in April - about 50 people in total. Again, a good clean-up of the area took place.

Many thanks also to Tracey from the Council for supplying all the equipment and having the bags of rubbish, plus 2 tyres and a plastic/metal chair removed. The next litter pick is booked for Saturday 16 November 2024 at 2pm.

**Healthy School Streets** - Proposal for Riddlesdown Collegiate: as many residents will be aware, Croydon Council held an informal consultation, which ran in May 2024, about a proposals to install a Healthy School Street (HSS) zone for streets in and near to Riddlesdown Collegiate in Dunmail Drive.

The streets included in the proposed Zone were: Dunmail Drive (adopted end), Honister Heights, Grisedale Gardens, Grisedale Close, Derwent Drive, Eskdale Gardens and part of Ingleboro Drive up to the Buttermere Gardens junction from the Eskdale Gardens junction.

The hours of operation of the school street zone is proposed to be: Monday to Friday 8am to 9:30am and 2pm to 4pm and are applicable during term time only (although the notice boards erected in other HSS areas do not actually say this). The RRA believe these times are too long.

This will also affect those visitors who park in these streets for visiting Riddlesdown Open Space, and they will not be able to travel in these streets during the allocated times. Apparently, no deliveries, whether Amazon or other commercial deliveries, or supermarket food deliveries etc., made to residents living within the Zone will be allowed in during the allocated times. Does this mean that delivery drivers will have to park outside the Zone, or not deliver at the restricted times? Or enter into the Zone and get a fine!

The RRA noted in the proposals for this scheme that the Council said: "Riddlesdown Collegiate and local residents have reported problems with traffic, congestion, noise, and air pollution during school-run times." The RRA are the only Residents' Association recognised by the Council for this area, and Riddlesdown Collegiate is located in our area. The RRA have not asked for this proposed HSS scheme.

Both the Purley Oaks & Riddlesdown Councillors have told us they have not asked for the scheme. And when three members of the RRA Committee met with the Principal of the Collegiate, and the Head of one of the Colleges on 15 May, they both advised they were totally unaware of the proposal until reading about it on the Bank Holiday Monday (6 May). So they have not asked for the scheme. However, the RRA understands from the meeting on 15 May, and further correspondence with the Principal at the Collegiate, that they may/would favour some sort of HSS, but only a proposal that is



acceptable to nearby residents.

No resident has approached the RRA and asked us to approach the Council for a HSS scheme to be implemented at Riddlesdown Collegiate. So we are not sure how the Council can say this scheme has been asked for by the Collegiate and local residents!

The RRA received many comments on our Facebook page and e-mails from residents about this proposal. The vast majority were against the proposals. There were some supporters, but they were in the minority. Following this contact from residents, the RRA submitted an objection letter on 24 May to the Council.

The results of the consultation and recommendations will be presented at the July Cabinet meeting. If a decision is made by Cabinet to proceed with some, or all of the proposals, the Council will be carrying out the statutory consultation in August/September with implementation during the Autumn term.

In our objection letter we requested to the Council that if this proposed scheme is rejected and they are subsequently minded to implement another scheme, that they should first consult with the RRA, the two PO&R Ward Councillors and the Principal at the Collegiate with their alternative proposal. This would enable the RRA to consult with those residents affected.

If there are further updates, these will be made on the RRA website, in our E-Blast and our Facebook page.

### **Overhanging Hedges, Shrubs and Trees onto Pavements and Public Footpaths**

Can we please remind residents, that the RRA do receive a number of complaints from residents, about households within the area who allow vegetation from their gardens to overhang the pavement and public footpaths.

This vegetation can cause particular inconvenience for people with buggies, in wheelchairs, on motorised mobility scooters, the disabled who are trying to navigate the footpaths. It is also major concern for the blind and visually impaired who could walk directly into the vegetation and injure themselves.

All property occupiers are legally responsible for ensuring that this does not happen and could have damages awarded against them by a court for any injury that occurs as a result. The Council do have the power to serve a notice on the household and, if necessary, undertake the work themselves by removing the danger and charging the owner/occupier accordingly. So please do check whether any of your vegetation is overhanging the pavement/public footpath and, if so, please arrange to cut it back to at least level with your boundary. Rose bushes can be particularly painful and dangerous.

You might think, 'I am not the owner, but a tenant of the property, so it's not my responsibility?' So far as the law is concerned, the occupier is usually responsible for this sort of maintenance and, in addition, tenancy agreements often include routine maintenance. Even if your tenancy agreement states that the landlord is responsible, you would be required to contact him/her and ensure that pruning is carried out as soon as possible. The Council do have Street Inspectors who tour the Borough looking out for this type of overhanging vegetation onto the highway and will then serve a 14-day notice on the owner/occupier.

To report any overhanging vegetation, it is best to use the Council's Love Clean Streets app. You might get a response back at a later date, stating that it is not the council's responsibility but that unfortunately is the way the app is set up. But we are told it has been logged and action will be taken to serve a notice on the

owner/occupier. The app is not Croydon's design, but an app used by many Local Authorities. The alternative is to report it via the main telephone number on: 020 8726 6000.

**RRA Website, the E-Blast and Facebook:** the RRA's Facebook page continues to be successful and a lot of useful information is posted and shared on there. If you are on Facebook why not give us a 'like' or 'follow' us! If you are not on Facebook, we have a monthly E-Blast newsletter which is sent by e-mail to residents who register with us, usually at the

beginning of each month. The E-Blast may be sent out more often if important information needs to be made available to residents, for example, concerning some planning applications or road closures. You will need to subscribe to receive the E-Blasts and the sign up is on our website; [riddlesdownresidents.org.uk](http://riddlesdownresidents.org.uk). Scroll down the home page and registration is on the bottom left side of the page where it says: "subscribe to our mailing list". Planning applications and decisions in our area are usually updated every Saturday on our website.

## MEMBERSHIP

BY JOHN RAPP

Since our residential area was created in the 1930s there have been many changes. While this is a small community where people can get to know each other, sometimes the pressures of modern life can make us all feel more isolated and lonely.

I am thinking of such things as the interaction of data protection, social media privacy conditions and working long shifts sometimes at a workplace, but also working from home, as factors potentially restricting our ability to interact with one another.

I am encouraged by knowing that if I contact any resident, I will find that they know their close neighbours. What they often do not have is collective knowledge of the barriers that affect all of us and how to act against those barriers. After Covid, I am keen on restoring the feeling of living as part of a knowledgeable and caring community. The Riddlesdown Residents' Association is there for giving guidance to the people who provide service to people living in our area, whether homeowners or renting.

I have recently heard reports of people appreciating help with, among other examples, dealing with the Council and its website. Another example is the fact that last year 750,000 people objected to the proposed closure of ticket offices. Ticket offices and their dedicated team of staff offer a wide range of benefits to the travelling public. Akil, at Riddlesdown Station (and his counterparts at Sanderstead Station) delight in saving rail travellers additional money that online ticket selling systems often take.

Since last year, we have offered the option of paying the yearly £5.00 subscription by bank transfer or standing order, although paying your Road Steward in cash remains an option. Please regard him or her as giving you a service when they collect your £5.00. With some people paying by bank transfer they may have more time to talk to you. Please encourage them. I can always use a new Road Steward. Please let me know if you would like to do your bit, and get to know people who live close to you.

# TRANSPORT

## BY JOHN RAPP

A lot has been happening, and continues to happen, since I last shared thoughts with you, and so there is lots to share.

Last year saw the proposal to close most ticket offices, including at Riddlesdown Station. There were around 750,000 responses to the proposal and the railway operating companies were told that these proposed closures would be a step too far. Bearing in mind that Covid destroyed the franchise system, with the Department for Transport required to fund UK railways during the Pandemic - so that the railways were effectively nationalised, the Train Operating Companies, having done what DfT asked by proposing to close ticket offices, were less than happy after the announcement that they were taking a step too far.

The ticket office at Riddlesdown is run by Akil, who is in his office from 06:00 to 13:00 Monday to Friday, and 07:00 to 14:00 on Saturdays. He is there to assist all of us and to offer help finding the cheaper fares, which he know about but are often hard to find using the internet, and station ticket vending machines (TVMs). As a lot of us are working from home for some of our work and going to work on other days, it will be good for breaktime during home working days to include a visit to see Akil. Please remember the saying "Use it or lose it."

On the railway the February 2024 Blockade (Streatham Hill to Beckenham Junction & Streatham to Herne Hill) has been deferred. The blockade (to commission signalling improvements) could take place in August and I leave you to watch for news.

Personally, when Croydon Tramlink started operations in 2000, I recognised that having spent around two hundred million pounds on the

system closure was very unlikely. This has been confirmed by the work that has been done, and will continue to be done on the permanent way. This year the work started in February and will continue into April. So far no one has told us of plans for August (school summer holidays). Added to this Croydon Tramlink are campaigning for a new fleet of trams.

Trains and trams run on rails and have little scope for avoiding obstructions, like roadworks and accidents. Buses can be easily diverted, both temporally (a few days on weeks) and permanently (for the next few years). The Sutton and Croydon Bus Changes had its first stage implementation on 2nd March. There are a few tweaks still to be introduced.

On the roads, various School Streets have been introduced. Please take care (remembering that you need to register a replacement car before taking children to affected schools) not to needlessly donate money on school days.

We now have three of the Superloop bus routes serving Croydon. Following the Superloop routes around London (roads chosen to allow express (limited stop) buses to operate) may be a way to avoid using the M25.

Talking of possible improvements, I have commented on things happening outside Riddlesdown. One thing that gives hope for restoration of the half hourly train service during the day, is the improvement on the west of Brighton South Coast train service currently being introduced.

I think I have managed to avoid political things, but would mention that I have heard lots of frustration expressed about the Streatham Low Traffic Neighbourhood - which is currently suspended.

# YOUR CONTRIBUTIONS & ARTICLES

*Thank you to all the RRA Committee for their contributions – we now have your contributions, information, articles, letters and photographs on the following pages.*

## **Riddlesdown – an Artist’s View**

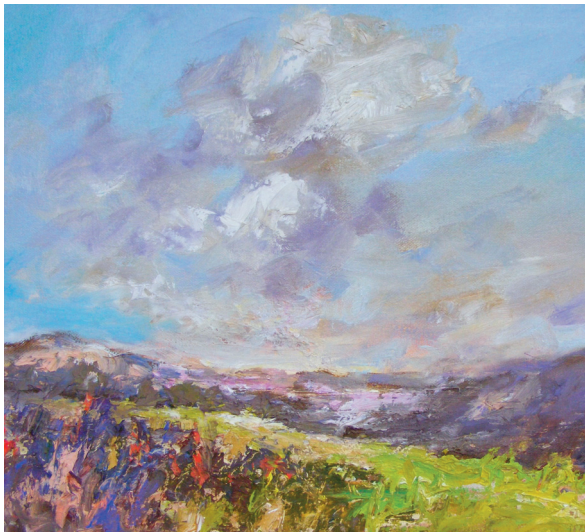
by Melanie Cambridge

I have lived in Riddlesdown for many years, but it was only during lock-down that I really started to explore and paint this precious landscape. Until then, my main inspiration had been the English coastline and beaches, particularly around West Wittering and the Solent and these subjects still form an integral part of my work today.

Being unable to travel during lockdown, like many others, I began taking my daily walk on Riddlesdown, just to escape from the confines of being at home.

Loving big open views and skies, I began to sketch and look around this precious resource on my doorstep from an artistic point of view. Later on, as restrictions eased, I started taking my easel to paint “en plein air” creating quick oil studies on a fairly small scale, particularly of the wonderful skies from the top of the Downs looking towards Caterham Valley.

Back in the studio with my head full of ideas and lots of sketches, photographs, and small oil studies, I paint on a larger scale, such as this view looking southwest from Skylark Field towards Kenley and Caterham which is 51 x 61cm (Commissioned paintings can be as large as 61 x 91cm).



### **Big Skies over Kenley**

Earlier this year I was painting on location near to the car park. It was a rather cold and dull day but suddenly the clouds parted, and a burst of sunlight came through, transforming the whole scene. A couple passed me walking their dog along the main path, so I popped them in. The gentleman’s red jacket made a great spot of colour in a painting of muted greens and greys.

To find out more about Melanie and her work, take a look at her website: [www.melaniecambridge-fine-art.co.uk](http://www.melaniecambridge-fine-art.co.uk) or pop down to Paolo Francis Gallery in South Croydon where you will find a changing collection of original paintings.





A break in the Clouds

Whilst the weather here is fairly mild, even in winter, sometimes we do get snow and whenever it happens, I grab my paints and drag my easel up to the top of the downs to paint. If we get a little sunshine, then the shadows cast by winter trees are delightful. So, if you spot me sketching or see me hunched over an easel, even in winter, do stop and say hello.



The Sundial Tree

Now that spring is finally on its way, the chalk grassland is starting to transform itself with wildflowers, orchids and many other rare plants making it a very special place to paint. I can't wait to see the cattle and Jacob sheep returning to Riddlesdown. They too are an important part of life on the common and great to paint!



## Riddlesdown Pharmacy

Local • Friendly • Reliable • Well Stocked

104 Lower Barn Road, Purley CR8 1HR (opposite Riddlesdown Station)

Mon - Fri: 9am - 1pm. 2.15pm - 5.30pm | Wed: 9am - 1pm. 2.30pm - 5.30pm | Sat: 9am - 1pm

Open  
Saturdays  
Convenient  
parking

- Prescriptions dispensed and delivered if needed
- Flu vaccination service
- Weekly medication blister packs dispensed
- Specialist advice on vitamins and minerals
- Pharmacy First prescribing service provided

**New Number: 020 8645 2597**

**We dispense prescriptions from  
all Surgeries including Keston House**

## RRA Area Street Names

Ben Winstanley

When we first moved to Riddlesdown a few years ago, I was surprised to see a number of unusual street names. I learnt of our area's links to the Lake District through the builder of the estate, John Laing, as explained in the Bourne Society's "Village Histories – I. Purley": "John Laing development – he liked the Lake District [having been born in Carlisle] and consequently named all the roads in the triangle bounded by Mitchley Avenue, Riddlesdown Road and Dunmail Avenue after places there".

I thought that it might be interesting to provide some more detail on these street names, as well as others in the RRA area. The 'Lake District' streets are marked with \*s below. Hopefully this will be helpful for others like me that spend a lot of time wandering the local area!

- Barn Crescent – "On the site of a barn" (VH3) – although I cannot see this on the 1914 Ordnance Survey map, so it may be linked to Lower Barn Close (see below)
- \* Borrowdale Close and Borrowdale Drive – the Borrowdale valley (quite close to Lake Buttermere, below) carries the River Derwent to Derwentwater
- Brancaster Lane – Brancaster is a small village in north Norfolk, originally settled by the Romans. The road was built fairly late ("a farm track and still undeveloped in 1929" (VH3)). I have struggled to find a link to John Laing or Cumbria – perhaps others may know?
- \* Buttermere Gardens – Lake Buttermere is one of the smaller lakes, visited by Wordsworth and Coleridge and painted by Turner, with a village of the same name (around 50 households). Its name probably means 'the lake by the dairy pastures' in Old English, but some link it to an 11th-century Norse chieftain called Buthar who may have lived in the area
- Coombe Wood Hill – leads up to Coombe Wood at the entrance to Riddlesdown Common. A coombe is a small valley without water flowing through it
- Copthorne Rise – "An ancient name for one of the local farm houses or 'halls'" (VH3). Copthorne = 'at the copped (pollarded) thorn tree', dating at least to 1086AD – the location of the tree is disputed, but there is a field called Copthorn in Banstead (EPNS).
- Coxley Rise – "Coxley Plane" (not 'plain') is shown as a wooded area on the 1914 Ordnance Survey map, with a trig point at 419ft (128m) in the middle of it. 'Cook's clearing' (Coces = cook's + Leah = clearing)
- Cranford Close – possibly named after a Laing estate in Cranford in 1935 (now next to Heathrow Airport)
- \* Dalegarth Gardens – Dalegarth Falls are in the Eskdale valley, falling c.150ft (45m) with the greatest single drop being 60ft (18m). In 1915, Dalegarth railway station was built as the terminus for transporting iron ore; today it is a heritage steam railway
- (\*) Dalton Close – "named after Atwood Dalton Wigsell" (VH3), squire of Sanderstead 1827-78. For an extra Lake District link, Dalton-in-Furness is to the south end of the Lake District (in Lancashire rather than Laing's Cumbria), and dates back to the Domesday Book of 1086AD



- \* Derwent Drive – Lake District river, which flows through the Borrowdale valley. Wordsworth’s childhood home backed onto the river. Thought to derive from the Celtic for ‘oak trees’
- Downs Court Road – “Down Court” is marked on the 1898 Ordnance Survey map at the very bottom of the road, in the triangle between Downs Court Road and the Godstone Road/A22; flats now stand on the site
- \* Dunmail Drive – Dunmail was the legendary last king of Cumbria, said to have been killed by the Saxons around 965AD at a pass which still bears his name, Dunmail Raise. Wordsworth and others told the story in the 18th and 19th centuries
- \* Eskdale Gardens – a glacial valley containing the River Esk in the centre of the Lake District
- \* Grisedale Close and Grisedale Gardens – there are a number of Grisedales: it is a dale (open valley) on the far east of Cumbria, used for farming at the time that our Laing estate was built; Grisedale village and forest are between Lakes Coniston and Windermere in the south of the Lake District; and Grisedale Pike (620m high) is close to Lake Buttermere in the north of the Lake District. Grisedale means ‘valley of the pigs’ in Old Norse
- Hill Close – anyone who walks up here regularly will understand the reason for the name!
- \* Holmwood Avenue – Holme Wood is on the shore of Loweswater, on the western side of the Lake District. Holme = ‘island’
- \* Honister Heights – Honister Pass is between the Buttermere and Borrowdale valleys, and is one of the area’s highest passes at 356m with a gradient of 1 in 4. Honister today calls itself “England’s last working slate mine”
- Hyde Road – “In the Domesday Survey SANDERSTEAD was found to belong to the abbey of St. Peter of Hyde at Winchester” (VCH); Sanderstead Manor was surrendered to Henry VIII in 1538. (Hyde Abbey gatehouse is still standing in Winchester)
- (\*) Ingleboro Drive – Ingleborough is the second highest peak in the Yorkshire Dales (723m), with Ingleborough Caves beneath first discovered in 1837. A hotel nearby was called the “Ingleboro Hotel” in 1925 which may explain the spelling of our road
- Lower Barn Road – “From a field name” (VH3). On the 1844 tithe map, the part west of today’s Riddlesdown Station railway bridge would have been in Great Barn Field; much of the road on the east of the bridge would have been in Little Barn Field. Why did ‘Little’ change to ‘Lower’? A small unlabelled building is marked on the 1914 Ordnance Survey map on the north-east side of the bridge, which may have been a lower barn for Purley Farm. (Purley Farm was on the side-road on Riddlesdown Road where numbers 79-79N and garages for some of Riddlesdown Avenue are today)
- Mitchley Avenue and Mitchley Hill – “Mitch = much, ley = leigh = open space in woodland” (VH1). Named after nearby Mitchley Wood which today has the 19th Purley Scouts

- Purley Bury Avenue and Purley Bury Close – Named after Purley Bury House (on Lexington Avenue) which is believed to be the oldest house in Purley, possibly built around 1600 (VHI). Purley (which was a place name by 1200AD) is likely to be ‘a wood or clearing where pear trees grow’ (Pir = pear tree; lea = clearing or place). Bury is from the Saxon, ‘a stronghold’
  - Rectory Park – runs towards the old rectory at Sanderstead, built in 1680 (VCH)
  - Riddlesdown Avenue and Riddlesdown Road – “Ridde = get rid of, leah = cleared woodland, hence, rid a piece of woodland of its trees” (VHI)
  - \* Rydal Close – a village between Grasmere and Ambleside, in the centre of the Lake District. Wordsworth often had picnics at Rydal Water, and lived in Rydal Mount from 1813 until his death in 1850
  - Tandridge Gardens – named for Tandridge, still a rural area between Godstone and Oxted south of the A25. ‘Tenhric’ dates to c.965AD; it runs along a ‘ridge’ but there is debate on the ‘ten/tan’
  - Westfield Avenue – this was built across two fields at the end of a track leading to Whitehouse Farm by the Sanderstead roundabout (the White House still stands in Sanderstead today). The further field was named Upper Goss on the 1844 tithe map (in VH3) but the closer field is unnamed – perhaps this was the farm’s ‘west field’
- the John Laing development. I would be grateful for any other research/views that may correct any of my assumptions.
- And finally: Just as our street names reference locations in Cumbria, Yorkshire, Lancashire and Norfolk, I was interested to see that other John Laing-built estates reference (or advertise?) our area: the Golders Green estate, built like ours around 1930, contains a Purley Avenue leading to Sanderstead Avenue!

Further reading / sources:

- Bourne Society (Higham, A., editor) (1996): Village Histories – 1. Purley (“VHI” above)
- Bourne Society (Gadsby, J., editor) (1998): Village Histories – 3. Sanderstead (“VH3” above)
- English Place Name Society (“EPNS” above)
- Harman, K. (2010): Riddlesdown Farm and the Story of the Laing Estate, in The Bourne Society, Local History Records, vol. 64, 3-16
- Mills, A. D. (2010): A Dictionary of London Place-Names (Oxford University Press)
- Victoria County History (1912): A History of the County of Surrey: Volume 4 (<https://www.british-history.ac.uk/vch/surrey/vol4/>) (“VCH” above)

Note: Apart from Riddlesdown Road and Downs Court Road, none of the roads above exist on the 1914 Ordnance Survey map – so the majority were built and named as part of

**19th Purley Scout Group**

Liz O'Brien, Group Scout Leader, 19th Purley (Riddlesdown)

It has been another busy year for the 19th Purley.

In September, we supported the Rotary Club and Priscilla's for their annual Sanderstead Community Day. We held tug-of-war competitions throughout the day which were a real crowd pleaser. As usual the 19th Purley supplied the large marquee for the entertainment square.

We had our annual firework night in November. As usual this was a great success, with everyone getting their food and drink in good time to watch the fireworks.

In November we also commemorated Remembrance Sunday. It is always with great pride that we take part in these parades every year, to show our respect to those who have lost their lives during conflict. And in March we celebrated St George's Parade where we renew our promises.

The 19th Purley closed for Christmas, but before we did so we held our annual carol singing at Sanderstead, Riddlesdown and Purley train stations. The children, dressed in festive headwear, were in fine voice and the commuters were very kind with their smiles and donations.

As always, embedded within the Scout ethos, we like support the local community. The 19th Purley donated 85 chocolate selection boxes to Purley Food Hub at Christmas time to ensure all the families they support received a nice treat. We also supported the Riddlesdown Residents Association with their litter pick which was well attended.

We have held 3 art fairs and our first pre-loved fashion sale which is a great way of supporting the local community.

On 18 May we held our annual Family Fun Day to which the whole community is always welcome. We had a break last year due to the date clashing with the Coronation, but we were back with an event featuring a dog show, stalls and games and a bar-be-que.

We also had a well attended group camp that took place at Cudham Shaw over the May



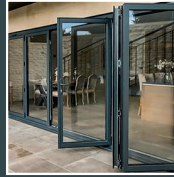
half-term, where we enjoyed activities including grass sledging, axe-throwing and a traditional camp fire.

To find out more about our Group please contact me below:-

19thpurleyscoutgroup@gmail.com  
<https://19thpurleyscoutgroup.org/>



# SW SANDERSTEAD WINDOWS



## A STYLISH RANGE OF WINDOWS & DOORS TO SUIT YOUR PROPERTY TYPE & INDIVIDUAL TASTES

Here at Sanderstead Windows we offer a stylish range of windows and doors. Our attention to detail, the quality of products and the care for those who use our products is what ensures we deliver unrivalled standards of customer service and workmanship every time.

We offer **FREE NO OBLIGATION** quotes and are there to help you with any questions you have. Whether you are looking to replace existing windows or are starting a new construction project, we have the product to suit you.



We offer a beautiful range of both uPVC and aluminium windows and doors that are customisable to suit your tastes and needs, all coupled with thermal efficiency and a host of security features designed to keep you and your family safe and warm.

GET IN TOUCH FOR YOUR **FREE NO OBLIGATION QUOTE**

# 0208 406 0282

ENQUIRIES@SANDERSTEADWINDOWS.CO.UK  
WWW.SANDERSTEADWINDOWS.CO.UK

UPVC & ALUMINIUM • WINDOWS & DOORS • BIFOLD DOORS • SLIDING DOORS

## Riddlesdown Collegiate

Dr Parimal Bhatt Principal –

It is a pleasure to be writing my first article in the Riddlesdown Recorder as Principal of Riddlesdown Collegiate. I enjoyed meeting members of the Riddlesdown Resident's Association along with the Headteacher of Pegasus College, Mr Lee Harkness, to discuss how to create an even stronger bond between our students and our community. We are in the process of planning a series of community projects to take place over the next academic year and look forward to sharing news about these in this publication as well as our Collegiate newsletters, 'The Riddlesdown Read' and 'The Collegiate Chronicles.' I invite you to follow us on our Facebook, Linked In, or X social media accounts for the latest updates about Collegiate life.

It has been a very busy academic year so far at the Collegiate, with many important weeks to come, with examinations, showcase events, sports day and the Summer Concert. However as the days become longer and the sun shines brighter, it is an opportunity to pause and reflect on the highlights to date this academic year.

During the Autumn Term, we opened our doors to prospective families holding Open Evenings for our Year 7 and College VI 2024 cohorts. It was a delight to see and hear the pride our students have in their school and they truly are great ambassadors for our community. Our students use the word 'family' when describing Riddlesdown Collegiate and this is because of the 'small schools' model. Seeing the same close-knit group of students and staff in a College on a daily basis, means we have people who really do care for and support one another. It has been a privilege to witness so many acts of

kindness amongst our students, particularly our older students guiding our younger ones; be it helping them to read, teaching them coding, or raising funds for charity together. It is this atmosphere which makes Riddlesdown Collegiate such a special place to work and learn and it is that ethos of care underpinned by our values which results in us being the school of choice for so many families.

Our curriculum really came to life during the latter part of the Autumn Term, with many clubs and societies in full flow. Our College VI students led psychology, medicine, and South Asian societies. The Creative and Performing Arts College was bustling with excitement during rehearsals for the Christmas Concerts and preparations for the whole school production of Beauty and the Beast. Furthermore, the cold and wet winter months did not dampen the spirits of our keen sportspeople. Be it football, trampolining, Jiu Jitsu, basketball, rugby, or netball, students showed great dedication by doing their best during their training sessions and matches. This has resulted in great sporting success so far this year. We have a number of students signed up to and training with professional football clubs, including Crystal Palace and West Ham and are also building an incredibly successful Year 7 rugby team. Our Under-13 girls football team has been one of the best performing in the country, reaching the semi-finals of the National Cup and are preparing for the County Cup final. Sports and creativity will always be an integral part of our curriculum because the knowledge and skills developed through these activities are long-lasting and help students to develop a sense of character and identity.

Now that we have put the restrictions of the pandemic behind us, it is great to see our

teachers prepare novel and memorable educational opportunities for our students. We have had many fairs, trips, and visits this year, with students engaging with mathematics and languages competitions, science fairs, and visiting universities, museums, galleries and laboratories. We have over 100 students participating in Duke of Edinburgh expeditions and many more have been on field trips learning about research and data analysis. We also had the pleasure of hosting a large and well-attended further study and careers fair with students able to speak with professionals from a range of fields including photography, engineering, education, media, oil exploration, law and finance.

Leadership is a core characteristic we want our students to develop. Students have organised activities to improve reading, knowledge of current affairs, understanding of different faiths and cultures as well as issues relating to identity. During the summer term, students are focusing on preparing activities which will develop an understanding of how to care for and take an active role as citizens to improve the environment. Projects will focus on recycling, litter, sustainable materials, and protecting bees. Leadership for us is about our young people shaping a better future for society. Our role is to guide them and help them to thrive in this endeavour. It is a privilege to work with our young people and serve our families.

I look forward to continuing our work with the Riddlesdown community.

## Councillor's Report

Cllr Endri Llabuti

Listening to residents has been a central theme of Conservative Mayor Perry's administration, since he was elected in May 2022. This is reflected in the actions of all Conservative councillors in Croydon and we are putting residents at the centre of everything we do. Therefore, I am delighted to report the decision to remove the hideous wands and bases along the Brighton Road cycle scheme, which was put in place by the previous administration without a consultation, proper consideration for residents and the adverse impact it would have on parking and traffic. I recall during one of my meetings with residents on Allenby Avenue and numerous others stopping by to complain about the issues caused by the scheme. Emergency services that could not easily pass, refuse trucks holding up traffic and obstructions on the cycle lane itself, which the sweeping trucks struggled to reach. I was happy to see them removed and thank all residents who provided feedback to the consultation, which found that 89% of residents wanted the wands removed. Furthermore, on Brighton Road, I was pleased to see the application lodged (end of 2023), for a new Marks and Spencer Foodhall, with flexible space for studios and offices. This is to be built on the site of the former Milk and More building. Residents were equally enthusiastic about the application, with 96% in support (based on the developers' consultation). The project will deliver 149 new jobs, refurbishment of a current site that is underutilized, complete with 70 car park spaces. It represents very welcome investment in Purley.

Much more still needs to be done to secure the future of our high street. Equally important is the progress currently being made on

delivering a brand-new leisure facility, with a six-lane swimming pool, fitness studio as well as a soft play area and café. The current Purley Pool site is due to be redeveloped and feedback from residents thus far has been incredibly positive. During our monthly street surgeries, residents have commented that they are keen to have a pool in Purley and eager for the project to progress. This is an important development in the heart of Purley. On planning we continue to deliver the change residents wanted and expected. We have seen a slowdown in applications for the demolition of beautiful family homes to make way for lifeless, bland boxes of flats. The Conservative-led committee that has been in place now for over 2 years and has made real progress in preserving the character of the area and being sympathetic to local concerns and needs. Whilst at the same time, we continue to deliver much-needed housing across Croydon, in the right places.

Progress and improvements are visible across the council, although considerable challenges do remain. It has been a challenging period for grass cutting and maintaining verges and green spaces. I would like to thank the residents for raising their concerns and assure them that we are doing all we can to deliver the service to the suitable standard that we all expect. It must be noted that the service was entirely cut from the Council budget by the previous administration and hard work has gone into restoring the team, more work needs to be done to deliver the services required.

If I or my fellow ward Cllr Alasdair Stewart can be of any help, please do not hesitate to contact us on: [endri.llabuti@croydon.gov.uk](mailto:endri.llabuti@croydon.gov.uk) or contact us at: @PurleyCllrs on Twitter/X or pop by our monthly surgery which takes place on the first Saturday of the month at Tesco in Purley.

## Councillor's Report

Cllr Alasdair Stewart

Following my election in May 2022, my very first meeting was with a resident on Brighton Road about the blight and issues caused by the cycle scheme - introduced under an 'Experimental Traffic Order', where the consultation follows implementation.

Following a report to May's cabinet meeting, it was clear from the public consultation that residents did not support the scheme as it was implemented, and emergency services had also reported issues with their vehicles being able to get past traffic. It was therefore very pleasing to see the bases and wands being removed in June. The cabinet report also recognised issues with a number of junctions and other changes implemented as part of the scheme, including at the Purley Oaks Recycling Centre, and it is expected that plans will be developed over summer ahead of changes later in autumn. I will be continuing to work with the Mayor, council officers, and residents as we try to find a better layout and solution to the issues identified.

Residents will also be very aware that grass cutting, whether on highway verges or in our parks, has been unacceptably poor again this year. The grass cutting service was originally totally withdrawn in the 2021 council budget, and the Mayor restored some resource after his election in May 2022. It is fair to say that whilst it is easy to dismantle a whole service, it has proven far from straightforward to restore it, especially when we have been left with very poor data, systems, and equipment.

Whilst the council's grounds maintenance teams are working hard to ensure the grass is cut, it is clear this hasn't been good enough. New equipment has been purchased and delivered, and additional

contractors engaged to try and catch up. We want everyone to feel proud of where they live, and it is therefore very important that we manage to improve this service for residents. I will be continuing to press the Mayor and Cabinet Member to deliver a better service to local residents. I'm sorry that we haven't yet managed to get this right. Many residents may also be aware of the proposed new Marks & Spencer on Brighton Road, where the old Milk & More dairy was, and it was great to see so many residents responding in support of the application. I am hoping that a decision will be made in the coming weeks, which will deliver a much-needed new supermarket.

After two years as part of Mayor Perry's council administration as the Deputy Cabinet Member for Finance, at Annual Council in May 2024 I was appointed to a different role as Vice Chair of the Scrutiny & Overview

Committee, which will also include chairing the Scrutiny Streets & Environment Subcommittee. Given the grass cutting issues and other challenges with our public realm, this is an important role and opportunity to ensure the Mayor, Cabinet Member, and Council Officers are delivering the services that we all as council taxpayers all expect. Cllr Llbuti and I continue to host monthly surgeries in conjunction with the Purley & Woodcote councillors, in either Purley Tesco Extra or on Brighton Road in Purley town centre – this is usually the first Saturday morning of each month. Exact dates, times, and our location will be advertised on our Twitter (@PurleyCllrs) and Purley Councillors Facebook page. I can also be contacted directly via email [alasdair.stewart@croydon.gov.uk](mailto:alasdair.stewart@croydon.gov.uk) or telephone 07716 092 472 (please leave a message).



# Cherrill Print

Established 1976

The Complete Design & Print Service

## LITHO AND DIGITAL PRINTING

leaflets, brochures • booklets, newsletters • letterheads, business cards  
 invitations, order of service • personalised wedding stationery  
 funeral order of service • forms, carbonless sets  
 posters, photocopying • all types of finishing  
 professional, friendly service

for free advice or a quotation call us on:

# 020 8681 7826

[info@cherrillprint.co.uk](mailto:info@cherrillprint.co.uk)  
[www.cherrillprint.co.uk](http://www.cherrillprint.co.uk)

297 BRIGHTON ROAD, SOUTH CROYDON, CR2 6EQ

## COMMUNITY PAGES

Short pieces on local associations, events and activities. Submissions should be of around 150-200 words. Each edition we will also offer a 'Featured Group' section, in which an individual group can give a more detailed account of its activities and aims. If you would be interested in submitting an extended feature on your group please contact the editor at [editorrra@gmail.com](mailto:editorrra@gmail.com) or on 020 8668 4061 to discuss.

Featured Group

### We are Croydon!

Part of a UK-wide movement, Croydon u3a offers anyone with some spare time in their lives the chance to develop their interests, learn new things and make new friends. For a modest annual fee, you can join as many groups as you want. From Walking to Talking, Spanish to Singing, Dance Exercise to Writing for Pleasure, Table Tennis to Science & Technology – there's so much on offer. There are no entry qualifications. You won't get a certificate either. Learning is for the love of it. Extend your horizons. Feel stimulated. Make new friends. Share your knowledge and experience with others. To find out more see our website [Croydon u3a: Home \(u3asites.org.uk\)](http://Croydon_u3a:Home(u3asites.org.uk)) or find us on Face Book.

Members of Croydon u3a were delighted to be involved earlier this year in a project called 'The 100 Faces of Croydon' - showcasing portraits of 100 local people, who were photographed in the parts of Croydon which are particularly significant to them. The project culminated with a concert by the London Mozart Players at the Fairfield Halls, during which the 100 portraits were projected onto a large screen. The portraits are now displayed on an online gallery: [100 Faces of Croydon | A London Mozart Players Community-led Project](http://100FacesofCroydon|ALondonMozartPlayersCommunity-ledProject)

We were particularly pleased to take part in this project because it set out to 'celebrate the

diversity and uniqueness' of Croydon's community – a goal which we share. We pride ourselves on being inclusive and welcoming to everyone. There are no entry requirements for membership of Croydon u3a – and although most of our members are retired or semi-retired, we are open to anyone who has some free time in their week. We offer almost 70 Interest Groups – so that we feel confident that there is something for everybody.

Our members come from all parts of Croydon and our activities take place in different venues right across the Borough. We meet in halls, cafes, restaurants, pubs, theatres, cinemas and private homes - and we go out and about for visits, trips, and for outdoor activities, such as Walking and Cycling.

We celebrate the diversity of our membership and the extensive range of their interests ... to find out more, visit our website at: [Croydon u3a: Home \(u3asites.org.uk\)](http://Croydon_u3a:Home(u3asites.org.uk)), find us on Face Book or email [info@croydonu3a.org.uk](mailto:info@croydonu3a.org.uk)



A Walking group enjoying local green spaces



## Community Information:

A - Z of organisations in or close to Riddlesdown (more details on the RRA website)

<http://www.riddlesdownresidents.org.uk/communitypage.html>

### Bourne Society

Their website includes details of local publications, historical information, downloadable leaflets of walks around the area and photographs of Riddlesdown. Member only meetings; membership £10 a year. There is also a specific Sanderstead Local History Group, which holds monthly meetings for a charge of £2 per meeting for Bourne Society members only. [www.bournesoc.org.uk](http://www.bournesoc.org.uk)

### Cantilena Singers

A long established choir for female voices - we sing light popular songs, folk songs, songs from musicals, and carols at Christmas. There are no auditions and you don't have to read music. Rehearsals are held on Wednesdays at 7.30pm, Methodist Church, 102 Limsfield Road, Sanderstead, CR2 9EF (between All Saint's Church and Hamsey Green on the 403 bus route; parking available).

COME AND EXPERIENCE THE JOY OF SINGING IN THIS FRIENDLY AND WELCOMING CHOIR. For more information contact Jill on 07957 627783 or at [jkcharity@outlook.com](mailto:jkcharity@outlook.com) [www.cantilenasingerscroydon.org.uk](http://www.cantilenasingerscroydon.org.uk)

### Croydon Art Society

Holds meetings & exhibitions – information at <http://www.croydonartsociety.org.uk/>

### Croydon Camera Club

Meets at Shirley Methodist Church Hall most Wednesdays of the year & has outings to photogenic locations. Further Information [www.croydoncameraclub.org.uk](http://www.croydoncameraclub.org.uk)

### Croydon Decorative and Fine Arts Society

Lectures take place on the 2nd Thursday of each month except August and December at 10.45 a.m. in All Saints Church Hall, Onslow Gardens, Sanderstead CR2 9AB. Tea/coffee and biscuits from 10.00 a.m. Visitors welcome. Other activities include Special Interest Days, Visits and Study Tours. Membership Secretary; 020 8680 3049.

### CNHSS – Croydon Natural History and Scientific Society

Indoor meetings are usually held in the Small Hall of the East Croydon United Reformed Church, Addiscombe Grove, almost opposite East Croydon Station. [www.cnhss.co.uk/](http://www.cnhss.co.uk/)

### Croydon Symphonic Band

An amateur community wind band with 50 or so players that was formed by an ex Riddlesdown resident over 50 years ago. The band is based in Croydon. New members always welcome. [www.csb.org.uk](http://www.csb.org.uk)

### Croydon u3a

Part of a UK-wide movement, Croydon u3a offers anyone with some spare time in their lives the chance to develop their interests, learn new things and make new friends. For a modest annual fee, you can join as many groups as you want. From Walking to Talking, Spanish to Singing, Dance Exercise to Writing for Pleasure, Table Tennis to Science & Technology – there's so much on offer. There are no entry qualifications. You won't get a certificate either. Learning is for the love of it. Extend your horizons. Feel stimulated. Make new friends. Share your knowledge and experience with others. To find out more see our website Croydon u3a: Home ([u3asites.org.uk](http://u3asites.org.uk)) or find us on Face Book.



### **FoFD - Friends of Farthing Downs**

Regular talks & walks & meetings & exhibitions. Hold a Sunday Tea on Farthing Downs the last Sunday of each month, May to September. For more information - e-mail; fofd2@btinternet.com or telephone: 01737 554449.

### **London Mozart Players**

For details of concerts some of which take place locally.

[www.londonmozartplayers.com/](http://www.londonmozartplayers.com/)

### **North Wood Morris Men - Croydon's Own Morris Dancers**

They are always looking for new members to dance or play music. They will train dancers and musicians from scratch if need be. All are welcome.

<http://www.northwoodmorris.co.uk/>

### **Parkrun; Riddlesdown Common**

Free 5km Run Every Saturday at 9am - Further details and to register

[www.parkrun.org.uk/riddlesdown/](http://www.parkrun.org.uk/riddlesdown/)

### **Purley Bury Sports & Social Club**

(Brancaster Lane):

Bowls [www.purleyburybc.co.uk/](http://www.purleyburybc.co.uk/)

Croquet [www.purleyburycroquet.org.uk/](http://www.purleyburycroquet.org.uk/)

Tennis [www.purleyburytennisclub.net/](http://www.purleyburytennisclub.net/)

### **Purley and District Townswomen's Guild**

Meet in the Lounge, United Reformed Church, 906 Brighton Road, Purley CR8 2LN (next to Purley Hospital). First Tuesday every month, 2 – 4pm. Hold regular talks, lunches, etc. Try before you buy! First meeting free.

[www.purley-guild.webplus.net/](http://www.purley-guild.webplus.net/) or email [admin@purley-guild.com](mailto:admin@purley-guild.com)

### **Purley Literary Society**

Meetings run from October to March. Talks are in the hall of the Purley URC Church, 906 Brighton Road – next to Purley Hospital, at 8pm. Visitors pay £5 at the door or season ticket; £22 for eleven talks or 6 talks £12.

More information: [www.purley-literary-society.com](http://www.purley-literary-society.com)

### **Ramblers (Croydon) - [www.croydonramblers.org.uk](http://www.croydonramblers.org.uk)**

### **Ramblers (Surrey) –**

[www.surreyramblers.org.uk](http://www.surreyramblers.org.uk)

### **Riddlesdown Lawn Tennis Club,**

Lower Barn Rd

A small friendly club where everyone is welcome - regardless of age, experience or skill. Junior section with full coaching sessions organised by MDL Coaching on Sat mornings throughout year. Further details – Dave Kerr - 07773 818443. [www.riddlesdownltd.com/](http://www.riddlesdownltd.com/)

### **RSPB Croydon Local Group**

Monthly Illustrated Wildlife Talks in South Croydon at Whitgift Sports Club, Croham Manor Road - off Croham Road. South Croydon, CR2 7BG

Second Monday of each month, 2pm and again at 8pm.

Admission £4.00. Everyone is welcome, not just RSPB members.

Free refreshments. A selection of RSPB goods, nuts & seeds are on sale.

Parking limited on site but free in adjacent roads.

64 & 433 buses stop nearby in Croham Road. Whitgift Sports Club, Croham Manor Road -

For more information contact John Davis on 020-8640 4578

also see [www.rspb.org.uk/groups/croydon](http://www.rspb.org.uk/groups/croydon)

## **St Edmund's Church & Community Hall, Riddlesdown**

St Edmund's Church & Community Hall, Riddlesdown St Edmund's Church & Community Hall, Riddlesdown St Edmund's is a dual-purpose building, used both as a church hall and a Riddlesdown community resource.

Website

[www.sanderstead-parish.org.uk/st\\_edmund](http://www.sanderstead-parish.org.uk/st_edmund).

## **St Edmund's Tuesday Night Badminton Club**

Tuesday night badminton takes place between 8 - 9.30pm in St. Edmund's church hall during term time. We are a friendly mixed club with a mix of ability and would encourage new members to join. No absolute beginners please. Contact details: Mrs Christine Whitmarsh on 8660 2178 or just drop in one Tuesday evening.

## **Scouts and Girl Guiding**

**19th Purley (Riddlesdown)**, Dunmail Drive, off Mitchley Hill

[www.croydonscouting.org.uk/](http://www.croydonscouting.org.uk/)

**11th Purley Scout Group**; St Edmond's Church, Mitchley Avenue, Riddlesdown

[www.http://11thpurley.org.uk/](http://www.11thpurley.org.uk/)

**16th Purley Scout Group** (All Saint's Group, Sanderstead)

[www.croydonscouting.org.uk/where-do-we-meet/beavers-cubs-and-scouts/16th-purley-7th-sanderstead-all-saints-group/](http://www.croydonscouting.org.uk/where-do-we-meet/beavers-cubs-and-scouts/16th-purley-7th-sanderstead-all-saints-group/)

**18th Purley** (United Reform Church). Scout HQ in Farm Fields.

<http://www.18thpurley.org.uk/>

**Beavers** – Thursdays; 5.00 – 6.00pm

**Cubs** – Mondays; 6.30 to 8.00pm

**Scouts** – Thursdays; 7.30 to 9.00pm

## **Croydon Girl Guiding**

[www.girlguidinglaser.org.uk/gdlgallery/croydon](http://www.girlguidinglaser.org.uk/gdlgallery/croydon)

## **Sanderstead Cricket Club**

14 Old Saw Mill, Limpsfield Rd, Sanderstead (entrance opposite The Gruffy). Website: <http://sanderstead.play-cricket.com/>

## **Sanderstead Dramatic Club -**

Contact Mr John Desbottes - Tel 01883 625656 - <http://www.sdclub.org.uk/>

## **Sanderstead Evening Townswomen's Guild**

Contact Mrs Doreen Nicholls - Tel 020 8657 2072. Meets 3rd Monday of the month at 7.45pm at Sanderstead Methodist Church Hall. [www.the-tg.com/Guild/sanderstead-evening/375.aspx](http://www.the-tg.com/Guild/sanderstead-evening/375.aspx)

## **Sanderstead Horticultural Society**

Wettern Tree Garden, Purley Oaks Road. Membership £6 per family. Contact Val Burley 020 8651 5837. Five member lectures a year & Garden Outings to great gardens. Other member benefits including horticultural advice & Knights discount.

## **Sanderstead Village WI**

<http://www.sandersteadwi.btck.co.uk/>

## **Selsdon Camera Club**

Meet Fridays at 7.30 pm (for a 7.45 pm start) The Methodist Halls 102 Limpsfield Road, Sanderstead. <http://www.selsdoncameraclub.co.uk/>

## **Selsdon Little Leagues Football & Netball**

Providing Football and Netball for local children in the Croydon area.



## **Stagecoach Croydon - Theatre Arts Schools for Children**

Fridays at Riddlesdown Collegiate  
4.30 - 7.30pm; 6 - 18 years; 4.15 - 5.45pm; 4 - 6 years.

Saturdays at Croydon High School  
10 am - 1pm or 2.30pm - 5.30pm; 6-18 years;  
9.30 am - 11am or 11.15am - 12.45pm; 4-6 years. Tel 0845 265 7083  
[www.stagecoach.co.uk/croydon](http://www.stagecoach.co.uk/croydon)

## **Storisse**

EACH STORY IS UNIQUE. After many months of planning, storisse.com is finally here. Storisse is a website which celebrates worthwhile work carried out by worthwhile charities, in a different way. Being a storyteller by profession, Alex Cuncev tells real life stories that are meaningful, moving and engaging.

Her personal stories are linked to thoughtfully researched charities. Read storisse.com for weekly updates on amazing work, positive thoughts and heart-rendering stories! You can also submit your own story on the website.

This is what her readers say: 'These stories are like big hugs. Just enjoy a cup of tea and dive into this sweet universe filled with sunshine and kindness.' All on storisse.com

## **Surrey Wildlife Trust**

More Information Tel: 01483 795440 or  
[www.surreywildlifetrust.or](http://www.surreywildlifetrust.or)

## **The Jolly Farmers**

Live Music & Entertainment several times a week, usually free.  
7 Purley Road, Purley CR8 2HA, Tel: 0208 660 2076 or [www.jollyfarmers-purley.co.uk](http://www.jollyfarmers-purley.co.uk)

## **The PROBUS Club of Sanderstead & Riddlesdown**

Meet at Whitgift Sports Club, Croham Rd, S Croydon. From noon on first Tuesday of every month. Further details contact:- Chris Babbs email: [chrisbabbsuk@waitrose.com](mailto:chrisbabbsuk@waitrose.com)

## **Walk & Cycle Surrey**

Further information:  
<http://www.walkandcycle.co.uk/surreytrails>

## **Warlingham Horticultural Society**

Hold Regular flower shows & plant sales in Warlingham & outings  
<http://warlinghamhorticultural.co.uk>

## **Younger Generation Theatre Group**

give an opportunity to 9-18's to appear on the professional stage  
All auditions and rehearsals in Purley  
[Www.youngergeneration.co.uk](http://www.youngergeneration.co.uk) or contact John Blundell 02086573214

## **DISCLAIMER**

Every effort is made to ensure that the above information is factually correct and is made in good faith but accuracy must not be assumed and no responsibility can be taken for any actions arising in the case of error or otherwise. Please bring to the attention of the Editor, any inaccuracies.

# Index to Advertisers

---

|                                  |    |
|----------------------------------|----|
| The Post Office . . . . .        | 2  |
| Simply Shredding . . . . .       | 5  |
| Britannia Sandersteads . . . . . | 8  |
| Des Res Blinds . . . . .         | 12 |
| Riddlesdown Pharmacy . . . . .   | 19 |
| Sanderstead Windows . . . . .    | 24 |
| Cherrill Print . . . . .         | 28 |

Thank you to these Advertisers, without whose support this magazine could not have been produced

If you would like to place an Advert, please contact Neil  
editorr@riddlesdown.org or on 020 8668 4061

## **Our MP (Croydon South - Conservative); Mr Chris Philp MP ,**

The House of Commons, London SW1A 0AA

Tel; 020 7219 8026

Email; [chris.philp.mp@parliament.uk](mailto:chris.philp.mp@parliament.uk) website; [www.chrisphilp.com](http://www.chrisphilp.com)

If you would like an appointment then telephone or e-mail.

## **Our Ward Councillors: All letters to Councillors should be sent: c/o The Town Hall, Katharine Street, Croydon CR0 1NX.**

|   |  |
|---|--|
| <b>PURLEY OAKS &amp;<br/>RIDDLESDOWN WARD</b> (Conservative)<br><b>Cllr Alasdair Stewart</b><br>Tel: 07716 092472<br>Email: <a href="mailto:alasdair.stewart@croydon.gov.uk">alasdair.stewart@croydon.gov.uk</a><br><b>Cllr Endri Llabeti</b><br>Tel: 07716 092461<br>Email: <a href="mailto:endri.llabeti@croydon.gov.uk">endri.llabeti@croydon.gov.uk</a> | <b>SANDERSTEAD WARD</b> (Conservative)<br><b>Cllr Yvette Hopley</b><br>Tel: 020 8604 7033<br>Email: <a href="mailto:yvette.hopley@croydon.gov.uk">yvette.hopley@croydon.gov.uk</a><br><b>Cllr Lynne Hale</b><br>Tel: 020 8405 6721<br>Email: <a href="mailto:lynne.hale@croydon.gov.uk">lynne.hale@croydon.gov.uk</a><br><b>Cllr Helen Redfern</b><br>Tel: 07783 152334<br>Email: <a href="mailto:helen.redfern@croydon.gov.uk">helen.redfern@croydon.gov.uk</a> |
|---|--|

## **GREATER LONDON ASSEMBLY MEMBER FOR CROYDON & SUTTON**

**Neil Garratt (Conservative)**

Email; [neil.garratt@london.gov.uk](mailto:neil.garratt@london.gov.uk)

## RIDDLEDOWN/LONDON/LUTON/BEDFORD TRAIN TIMES

### Southern Rail and Thameslink trains to and from Riddlesdown

**The Southern Railway and Thameslink rail service is not running to a full service due to reduced passenger numbers after the pandemic, so please consult the GTR or National Rail website.**

**Enquiries: Southern Railway:** Tel: 0345 1 27 29 20 (07.00 - 22.00 hrs) or southernrailway.com

**Thameslink:** Tel: 0345 026 4700 (07:00 to 22:00 hrs) or thameslinkrailway.com

**National Rail** Tel: 03457 48 49 50 or nationalrail.co.uk

### Local Bus Route and Frequency

Bus 412 (Arriva) – the 412 starts in Park Street, Croydon and then travels via Fell Rd, around the Fairfield roundabout, onto the flyover, then down the Croydon Flyover slip road into High Street, South End, Selsdon Rd, Upper Selsdon Rd, Addington Rd (stop for Selsdon), Rectory Park, Mitchley Ave, Downs Court Rd, Godstone Rd, Pampisford Rd & ends on Brighton Rd (High Street) opposite the Purley Hospital.

From Purley, the service is nearly in reverse direction starting from Purley Downlands Precinct, (Brighton Rd) then left into Godstone Rd, Down Court Rd and terminates at the bus stand in Park Street, Croydon.

**Approx Frequency Weekdays & Saturdays:** Early; 20 mins, Peak; 15 mins, Daytime; 15 mins, Evenings; 20 mins, Late Evenings; 30 mins. **Frequency Sundays;** 30 mins.

For exact timetable, consult the TfL website: [tfl.gov.uk/bus/timetable/412/](http://tfl.gov.uk/bus/timetable/412/)

**Enquiries:** TfL - Customer Services: 0343 222 1234 or TfL website: [tfl.gov.uk](http://tfl.gov.uk)

**Arriva London** Tel 020 8271 0101 (0800-2000 Monday to Friday) or website [www.arrivalondon.com/](http://www.arrivalondon.com/)

Links also available via the Transport section on the RRA website: [riddlesdownresidents.org.uk/transport.html](http://riddlesdownresidents.org.uk/transport.html)

Timetables are subject to change, so if in doubt, check with the rail and bus operator, TfL or National Rail. The RRA cannot accept any responsibility for the accuracy of any of the above information and times.

**Libraries:** Purley - Open only; Tuesday and Thursday. Selsdon and Sanderstead - Open only; Monday, Wednesday and Saturday. Please check, as Libraries are operating on a phased return to service.

Croydon Council's telephone number for all enquiries: 020 8726 6000

website: [croydon.gov.uk](http://croydon.gov.uk)

Address: London Borough of Croydon, Bernard Weatherill House, 8 Mint Walk, Croydon, CR0 1EA

**RRA Committee Meetings:** usually 3rd Wednesday in January, March, May, July, September and November. Contact a Committee member for details.



Save the Date!

RRR  
Children's  
Christmas Party

Featuring an entertainer, party tea and a visit from  
Father Christmas!

7th December 2-4

St Edmund's Church

The event is **free** but booking is required

To book a place please email

[eventsrra@gmail.com](mailto:eventsrra@gmail.com) from 1 October 2024

